



LANDS' END SCHOOL

Pine Lake Preparatory
104 Yellow Wood Circle
Mooresville, NC 28115
Preferred School Number: 900125410

Welcome to Lands' End School!

Guaranteed. Period.[®]

If you're not satisfied with any item, return it to us at any time for an exchange or refund of its purchase price.

Pass-along quality.

We're serious about comfort, construction and durability. So our products hold up from the first day of school to the last. (And through the next kid in line.)

Shop by dress code online. Preferred Schools can view their dress code online to make ordering even easier.

3% cash back.

Preferred Schools earn 3% cash back on all uniform purchases. It's easy and free to sign up – visit landsend.com/school

Sizes for grades pre-K to 12.

We offer a great selection of Slim, Plus and Husky sizes for boys and girls.



1-800-469-2222

landsend.com/school

LANDS' END SCHOOL

All prices in U.S. dollars. Prices subject to change.
©Copyright 2009, Lands' End, Inc. All rights reserved.



LOGO #0836208K

Polos and Pullover Fleece logo



LOGO #0826205K

Oxford logo



LOGO # 0834266K

Outerwear and Sweater logo

Logo #0836208K, Polo & Pullover Fleece logo, \$5.50

- Your school has provided this logo and set certain restrictions regarding its use. Please check each individual product in your Dress Code for details
- Personalized monograms are not allowed with this logo
- Actual embroidery thread colors may vary

Logo #0826205K, Oxford logo, \$5.50

- Your school has provided this logo and set certain restrictions regarding its use. Please check each individual product in your Dress Code for details
- Personalized monograms are not allowed with this logo
- Actual embroidery thread colors may vary

Logo #0834266K, Outerwear and Sweater logo, \$5.50

- Your school has provided this logo and set certain restrictions regarding its use. Please check each individual product in your Dress Code for details
- Personalized monograms are not allowed with this logo
- Actual embroidery thread colors may vary

Required styles for Grades K-8 Boys

- 1-Short sleeve white mesh polo, logo is mandatory
- 1-Short sleeve classic navy mesh polo, logo is mandatory
- 1-Long sleeve white mesh polo, logo is mandatory
- 1-Plain front or pleated front khaki pant, logo is not allowed
- 1-Drifter sweater vest in classic navy, logo is not allowed
- 1-Dark brown belt

Shoes

- Lower school: Only rubber-soled shoes allowed
- All grades: No crocs or flip flops



Short Sleeve Solid Performance Mesh Polo



Approved colors:

chambray blue, classic navy, deep purple, maize, white

Logo #0836208 is mandatory

Prices include logo

051465-BQ8	Tots 2T-4T	\$21.00
051467-BQ7	LITTLE Kid S-L	\$21.00
051469-BQ6	Kid S-XL	\$21.00
167541-BQ6	MEN S-XXL	\$25.00

- Soft, 100% cotton mesh
- Resists shrinkage, fading and pilling
- Stains wash out easier

Long Sleeve Solid Performance Mesh Polo



Approved colors:

chambray blue, classic navy, deep purple, maize, white

Logo #0836208 is mandatory

Prices include logo

051422-BQX	Tots 2T-4T	\$23.00
051437-BQ6	LITTLE Kid S-L	\$23.00
051438-BQ0	Kid S-XL	\$23.00
167539-BQ9	MEN S-XL	\$30.50

- Soft, 100% cotton mesh
- Resists shrinkage, fading and pilling
- Stains wash out easier

Drifter Sweater Vest



Approved colors:

classic navy

Logo is not allowed

223014-BQ3	LITTLE Kid S-L	\$25.00
223015-BQ8	Kids S-XL	\$25.00
223018-BQ1	MEN S-XL	\$29.50

- Soft-as-can-be cotton for all-day comfort
- Rib-knit trim keeps its shape wash after wash
- Adds a fresh look to any outfit



Plain Front Stain/Wrinkle Resistant Chinos



Approved colors:

classic navy, khaki

Grades 6-8: classic navy

Logo is not allowed

252118-BQ5	Tots 2T-4T	\$25.50
243847-BQ1	LITTLE BOY 4-7	\$25.50
243848-BQ6	LITTLE BOY SLIM 4-7	\$25.00
178254-BQ8	BOY 8-20	\$25.50
190515-BQ3	BOY SLIM 8-20	\$25.50
178255-BQ2	BOY HUSKY 8-20	\$25.50
243850-BQ3	MEN 30-44 EVEN, 31-37 ODD	\$32.50

- Soft 100% cotton
- Resists wrinkles, spills and stains
- Hidden adjustable waist provides a better fit
- Tots/Little Boy has back-elastic waist/snap closure
- Boy has a traditional waist/button closure
- Pre-hemmed

Plain Front Chino Pants



Approved colors:

classic navy, khaki

Grades 6-8: classic navy

Logo is not allowed

191125-BQ8	LITTLE BOY 4-7	\$25.50
191126-BQ2	LITTLE BOY SLIM 4-7	\$25.50
191127-BQ7	BOY 8-20	\$25.50
191128-BQ1	BOY SLIM 8-20	\$25.50
191129-BQ6	BOY HUSKY 8-20	\$25.50
191130-BQ9	MEN 30 EVEN, 31, 37 ODD	\$32.50

- Easy-care 60% polyester/40% cotton blend
- Reinforced pockets front and back
- Neat plain-front styling
- Little Boy has a back-elastic waist/snap closure
- Boy has a traditional waist/button closure

Pleated Stain/Wrinkle Resistant Chino Pants



Approved colors:

classic navy, khaki

Grades 6-8: classic navy

Logo is not allowed

252123-BQ6	Tots 2T-4T	\$25.50
243851-BQ8	LITTLE BOY 4-7	\$25.50
243852-BQ2	LITTLE BOY SLIM 4-7	\$25.50
178435-BQ0	BOY 8-20	\$25.50
178439-BQ9	BOY SLIM 8-20	\$25.50
178437-BQX	BOY HUSKY 8-20	\$25.50

- Soft 100% cotton
- Resists wrinkles, spills and stains
- Hidden adjustable waist provides a better fit
- Tots/Little Boy have back-elastic waist/snap closure
- Boy has a traditional waist/button closure
- Pre-hemmed



Pleated Chino Pants



Approved colors:

classic navy, khaki

Grades 6-8: classic navy

Logo is not allowed

231061-BQ5	LITTLE BOY 4-7	\$25.50
231062-BQX	LITTLE BOY SLIM 4-7	\$25.50
231063-BQ4	BOY 8-20	\$25.50
231064-BQ9	BOY SLIM 8-20	\$25.50
231065-BQ3	BOY HUSKY 8-20	\$25.50
231066-BQ8	MEN 30-44 EVEN, 31-37 ODD	\$32.50

- Easy-care 60% polyester/40% cotton blend
- Reinforced pockets front and back
- Little Boy has back-elastic waist/snap closure
- Boy has a traditional waist/button closure

Pleated Reinforced Knee Blend Chinos



Approved colors:

classic navy, khaki

Grades 6-8: classic navy

Logo is not allowed

231067-BQ2	LITTLE BOY 4-7	\$25.50
231068-BQ7	LITTLE BOY SLIM 4-7	\$25.50
231069-BQ1	BOY 8-20	\$25.50
231070-BQ4	BOY SLIM 8-20	\$25.50
231071-BQ9	BOY HUSKY 8-20	\$25.50

- Easy-care 60% cotton/40% polyester blend
- Hidden adjustable waist for a better fit
- Extra layer of interlining resists roughhousing
- Little Boy has back-elastic waist/snap closure
- Boy has a traditional waist/button closure

Blended Elastic Waist Chino Pants



Approved colors:

classic navy, khaki

Grades 6-8: classic navy

Logo is not allowed

092511-BQX	LITTLE BOY 4-7	\$25.50
092513-BQ9	BOY 8-20	\$25.50
092515-BQ8	BOY HUSKY 8-20	\$25.50
092516-BQ2	MEN 30-44 EVEN, 31-37 ODD	\$32.50

- 60% cotton/40% polyester
- Comfortable elastic waist
- Carefree - just toss in the wash



Blended Plain Front Chino Shorts



Approved colors:

classic navy, khaki

Grades 6-8: classic navy

Logo is not allowed

184383-BQ0	LITTLE BOY 4-7	\$19.50
231174-BQ5	LITTLE BOY SLIM 4-7	\$19.50
184384-BQ5	BOY 8-20	\$19.50
231175-BQX	BOY SLIM 8-20	\$19.50
231176-BQ4	BOY HUSKY 8-20	\$19.50
241937-BQ7	MEN 30-44 EVEN, 31-37 Odd	\$25.00

- Easy care 60% polyester/40% cotton
- Touch of elastic-waist ease
- Handy side pockets

Stain/Wrinkle Resistant Chino Shorts



Approved colors:

classic navy, khaki

Grades 6-8: classic navy

Logo is not allowed

231161-BQ8	LITTLE BOY 4-7	\$24.50
231162-BQ2	LITTLE BOY SLIM 4-7	\$24.50
231164-BQ1	BOY 8-20	\$24.50
231167-BQ5	BOY SLIM 8-20	\$24.50
231168-BQX	BOY HUSKY 8-20	\$24.50
231170-BQ7	MEN 30-44 EVEN, 31-37 Odd	\$29.50

- 100% combed cotton twill
- Resists stains for a neat appearance
- Adjustable waist for a great fit
- Neat, plain front
- Side & back pockets

Pleated Blend Chino Shorts



Approved colors:

classic navy, khaki

Grades 6-8: classic navy

Logo is not allowed

231149-BQ7	LITTLE BOY 4-7	\$19.50
231151-BQ4	LITTLE BOY SLIM 4-7	\$19.50
231152-BQ9	BOY 8-20	\$19.50
231154-BQ8	BOY SLIM 8-20	\$19.50
231155-BQ2	BOY HUSKY 8-20	\$19.50
231156-BQ7	MEN 30-44 EVEN, 31-37 Odd	\$25.00

- Easy care 60% polyester/40% cotton
- Touch of elastic-waist ease
- Handy side pockets



80/20 Fleece Crew



Approved colors:

classic navy

Logo #0834266 is mandatory

Prices include logo

306542-BQ1	LITTLE Kid S-L	\$21.00
306544-BQ0	Kid S-XL	\$21.00
219474-BQ6	MEN S-XXL	\$25.00

- Heavy on the cottony softness, just enough polyester sturdiness
- Garment washing says, "bye-bye" to shrinkage
- Reinforced shoulders stand up to tugging and toddling
- Sag-resistant rib-knit neck, cuffs and bottom

Polar Fleece Jacket



Approved colors:

classic navy

Logo #0834266 is mandatory

Prices include logo

188727-BQ5	LITTLE Kid S-L	\$35.00
188726-BQ0	Kids S-XL	\$35.00
188725-BQ6	MEN S-XXL	\$40.50

- Double-sided fleece holds out chills
- Improved fabric reduces pilling
- Full-zip front
- Two zip pockets

Polar Fleece Vest



Approved colors:

classic navy

Logo #0834266 is mandatory

Prices include logo

188731-BQ1	LITTLE Kid S-L	\$35.00
188730-BQ7	Kids S-XL	\$35.00
188729-BQ4	MEN S-XXL	\$40.50

- Double-sided fleece holds out chills
- Improved fabric reduces pilling
- Full-zip front
- Two zip pockets



Micro-Fleece Half-Zip Pullover



Approved colors:

classic navy

Either logo is mandatory

Choose either logo: #0836208 or #0834266

Prices include logo

315366-BQ0	LITTLE Kid S-L	\$25.00
315368-BQX	Kid S-XL	\$25.00

- Lightweight microfleece adds warmth not weight
- Partial-zip front for easy overhead dressing
- Antipilling finish keeps it looking neat

Welcome to Lands' End School!

Guaranteed. Period.[®]

If you're not satisfied with any item, return it to us at any time for an exchange or refund of its purchase price.

Pass-along quality.

We're serious about comfort, construction and durability. So our products hold up from the first day of school to the last. (And through the next kid in line.)

Shop by dress code online. Preferred Schools can view their dress code online to make ordering even easier.

3% cash back.

Preferred Schools earn 3% cash back on all uniform purchases. It's easy and free to sign up – visit landsend.com/school

Sizes for grades pre-K to 12.

We offer a great selection of Slim, Plus and Husky sizes for boys and girls.



1-800-469-2222

landsend.com/school

LANDS' END SCHOOL

All prices in U.S. dollars. Prices subject to change.
©Copyright 2009, Lands' End, Inc. All rights reserved.



LOGO #0836208K

Polos and Pullover Fleece logo



LOGO #0826205K

Oxford logo



LOGO # 0834266K

Outerwear and Sweater logo

Logo #0836208K, Polo & Pullover Fleece logo, \$5.50

- Your school has provided this logo and set certain restrictions regarding its use. Please check each individual product in your Dress Code for details
- Personalized monograms are not allowed with this logo
- Actual embroidery thread colors may vary

Logo #0826205K, Oxford logo, \$5.50

- Your school has provided this logo and set certain restrictions regarding its use. Please check each individual product in your Dress Code for details
- Personalized monograms are not allowed with this logo
- Actual embroidery thread colors may vary

Logo #0834266K, Outerwear and Sweater logo, \$5.50

- Your school has provided this logo and set certain restrictions regarding its use. Please check each individual product in your Dress Code for details
- Personalized monograms are not allowed with this logo
- Actual embroidery thread colors may vary

Required styles for Grades K-8 Girls

- 1-Short sleeve white mesh polo (feminine fit or regular fit), logo is mandatory
- 1-Short Sleeve classic navy mesh polo (feminine fit or regular fit), logo is mandatory
- 1-Long sleeve white mesh polo (feminine fit or regular fit), logo is mandatory
- 1-Plain front or pleated front khaki pant, logo is not allowed
- 1-Drifter sweater vest in classic navy, logo is not allowed
- 1-Dark brown belt

Shoes

- Lower school: Only rubber-soled shoes allowed
- All grades: No crocs or flip flops



Short Sleeve Solid Performance Mesh Polo



Approved colors:

chambray blue, classic navy, deep purple, ice pink, maize, white

Logo #0836208 is mandatory

Prices include logo

051465-BQ8	TOTS 2T-4T	\$21.00
051467-BQ7	LITTLE Kid S-L	\$21.00
051469-BQ6	Kid S-XL	\$21.00
167542-BQ0	WOMEN S-XL	\$25.00

- Soft, 100% cotton mesh
- Resists shrinkage, fading and pilling
- Stains wash out easier

Long Sleeve Solid Performance Mesh Polo



Approved colors:

chambray blue, classic navy, deep purple, ice pink, maize, white

Logo #0836208 is mandatory

Prices include logo

051422-BQX	TOTS 2T-4T	\$23.00
051437-BQ6	LITTLE Kid S-L	\$23.00
051438-BQ0	Kid S-XL	\$23.00
167540-BQ1	WOMEN S-XL	\$30.50

- Soft, 100% cotton mesh
- Resists shrinkage, fading and pilling
- Stains wash out easier

Short Sleeve Feminine Fit Mesh Polo



Approved colors:

chambray blue, classic navy, deep purple, ice pink, maize, white

Logo #0836208 is mandatory

Prices include logo

230948-BQ2	LITTLE GIRL S-L	\$21.00
230949-BQ7	GIRL S-XL	\$21.00
230950-BQX	WOMEN XS-XL	\$25.00
315253-BQ0	WOMEN PLUS 1X-3X	\$30.50

- 100% cotton
- Soft, mesh fabric keeps her cool
- Gently shaped side seams are more flattering
- Enhanced fabric keeps colors true
- Resists stains and shrinkage
- Top-of-hip length with side vents



Long Sleeve Mesh Feminine Fit Polo



Approved colors:

chambray blue, classic navy, deep purple, ice pink, maize, white

Logo #0836208 is mandatory

Prices include logo

230951-BQ4	LITTLE GIRL S-L	\$23.00
230952-BQ9	GIRL S-XL	\$23.00
230953-BQ3	WOMEN XS-XL	\$30.50
315261-BQ5	WOMEN PLUS 1X-3X	\$35.50

- 100% cotton
- Soft, mesh fabric keeps her cool
- Gently shaped side seams are more flattering
- Enhanced fabric keeps colors true
- Resists stains and shrinkage
- Top-of-hip length with side vents

Three-quarter Sleeve Oxford Shirt



Approved colors:

white

Grades 6-8

Logo is not allowed

027047-BQ7	LITTLE GIRL 4-6X	\$19.50
320036-BQ3	GIRL 7-16	\$19.50
027049-BQ6	WOMEN 00-20	\$25.00

- 60% cotton/40% polyester fabric foils wrinkles
- Breathable easy care fabric
- Feminine shaping for a better fit

Short Sleeve Ruffled Collar Peter Pan Knit Top



Approved colors:

white

Logo is not allowed

255159-BQX	LITTLE GIRL S-L	\$18.50
255160-BQ2	GIRL S-XL	\$18.50

- Cushy soft 100% combed-cotton knit
- Delicate ruffles and two-button placket
- Looks finished tucked in or out
- Top-of-the-hip length



Long Sleeve Ruffled Collar Peter Pan Knit Top



Approved colors:

white

Logo is not allowed

230938-BQ9	LITTLE GIRL S-L	\$22.50
230939-BQ3	GIRL S-XL	\$22.50

- Cushy soft 100% combed-cotton knit
- Delicate ruffles and two-button placket
- Looks finished tucked in or out
- Top-of-the-hip length

Fine Gauge Cardigan



Approved colors:

classic navy

Logo #0834266 is optional

For logo #0834266 add \$5.50 per item

092806-BQ7	LITTLE GIRL S-L	\$25.50
092807-BQ1	GIRL S-XL	\$25.50
092808-BQ6	WOMEN S-XL	\$40.00

- 100% cotton
- Fully fashioned to fit great
- No bulky shoulder seams
- Sag-free rib-knit trim

Cable Button Crewneck Sweater



Approved colors:

classic navy

Logo #0834266 is optional

For logo #0834266 add \$5.50 per item

320032-BQ5	LITTLE GIRL S-L	\$34.50
320033-BQX	GIRL S-XL	\$34.50

- 100% cotton
- Intricate all-over cable design
- Carefully knit to layer nicely over polos or blouses
- Full-button front



Stain Resistant Chino Pants



Approved colors:

classic navy, khaki

Grades 6-8: classic navy

Logo is not allowed

219336-BQ8	LITTLE GIRL 4-6X	\$29.50
219335-BQ3	LITTLE GIRL SLIM 4-6X	\$29.50
219338-BQ7	GIRL 7, 8-16 EVEN	\$29.50
219337-BQ2	GIRL SLIM 7, 8-16 EVEN	\$29.50
219339-BQ1	GIRL PLUS 7, 8-16 EVEN	\$29.50

- 98% cotton/2% spandex
- Performance fabric resists spills and stains
- Dash of stretch for added comfort
- Inside adjustable waist helps fine-tune the fit

Plain Front Blended Chino Pants



Approved colors:

classic navy, khaki

Grades 6-8: classic navy

Logo is not allowed

315346-BQ3	TOTS 2T-4T	\$25.50
231116-BQ2	LITTLE GIRL 4-6X	\$25.50
231117-BQ7	LITTLE GIRL SLIM 4-6X	\$25.50
231118-BQ1	GIRL 7, 8-16 EVEN	\$25.50
231119-BQ6	GIRL SLIM 7, 8-16 EVEN	\$25.50
231120-BQ9	GIRL PLUS 7, 8-16 EVEN	\$25.50
231121-BQ3	WOMEN 00-20 EVEN	\$32.50

- 60% cotton/40% polyester
- Blend fabric resists stains and wrinkles
- Inside adjustable waist helps fine-tune the fit

Poly Blend Feminine Fit Pants



Approved colors:

classic navy, khaki

Grades 6-8: classic navy

Logo is not allowed

381249-BQ3	GIRL 7, 8-16 EVEN	\$29.50
381250-BQ6	GIRL SLIM 7, 8-16 EVEN	\$29.50
381251-BQ0	GIRL PLUS 7, 8-16 EVEN	\$29.50
381252-BQ5	WOMEN 0-18 EVEN	\$34.50

- 60% cotton/40% polyester
- Blend fabric resists stains and wrinkles
- Inside adjustable waist helps fine-tune the fit



Pleated Front Blended Chino Pants



Approved colors:

classic navy, khaki

Grades 6-8: classic navy

Logo is not allowed

231110-BQ5	LITTLE GIRL 4-6X	\$25.50
231111-BQX	LITTLE GIRL SLIM 4-6X	\$25.50
231112-BQ4	GIRL 7, 8-16 EVEN	\$25.50
231113-BQ9	GIRL SLIM 7, 8-16 EVEN	\$25.50
231114-BQ3	GIRL PLUS 7, 8-16 EVEN	\$25.50
231115-BQ8	WOMEN 4-18 EVEN	\$32.50

- 60% cotton/40% polyester
- Blend fabric resists stains and wrinkles
- Inside adjustable waist helps fine-tune the fit
- Little Girl: snap-front closure, back elastic for ease
- Girl: button-front closure

Elastic Waist Chino Pants



Approved colors:

classic navy, khaki

Grades 6-8: classic navy

Logo is not allowed

092602-BQ3	LITTLE GIRL 4-6X	\$25.50
092604-BQ2	GIRL 7, 8-16 EVEN	\$25.50
092606-BQ1	GIRL PLUS 7, 8-16 EVEN	\$25.50
092607-BQ6	WOMEN 4-18 EVEN	\$32.50

- 60% polyester/40% cotton
- Comfortable full elastic waist
- Wrinkle-free fabric
- Slightly flared legs
- Two side pockets; one in back

Stretch Stain Resistant Flare Pants



Approved colors:

classic navy, khaki

Grades 6-8: classic navy

Logo is not allowed

231122-BQ8	LITTLE GIRL 4-6X	\$29.50
219329-BQ8	LITTLE GIRL SLIM 4-6X	\$29.50
231123-BQ2	GIRL 7, 8-16 EVEN	\$29.50
219330-BQ0	GIRL SLIM 7, 8-16 EVEN	\$29.50
231124-BQ7	GIRL PLUS 7, 8-16 EVEN	\$29.50
231125-BQ1	WOMEN 4-18 EVEN	\$35.50

- 98% cotton/2% spandex twill
- Performance fabric resists stains and spills
- Inside adjustable waist helps fine-tune the fit
- Little Girl: snap closure with back elastic for extra ease
- Girl: button-front closure



Feminine Fit Flare Pants



Approved colors:

classic navy, khaki

Grades 6-8: classic navy

Logo is not allowed

381253-BQX	GIRL 7, 8-16 EVEN	\$29.50
381254-BQ4	GIRL SLIM 7, 8-16 EVEN	\$29.50
381255-BQ9	GIRL PLUS 7, 8-16 EVEN	\$29.50
381256-BQ3	WOMEN 0-20 EVEN	\$34.50

- 98% cotton/2% spandex twill
- Performance fabric resists stains and spills
- Inside adjustable waist helps fine-tune the fit
- Girl: button-front closure

Stretch Crop Pants



Approved colors:

classic navy, khaki

Grades 6-8: classic navy

Logo is not allowed

191401-BQ0	LITTLE GIRL 4-6X	\$25.50
191402-BQ5	LITTLE GIRL SLIM 4-6X	\$25.50
191403-BQX	GIRL 7, 8-16 EVEN	\$25.50
191404-BQ4	GIRL SLIM 7, 8-16 EVEN	\$25.50
191405-BQ9	GIRL PLUS 7, 8-16 EVEN	\$25.50
191406-BQ3	WOMEN 4-18 EVEN	\$29.50

- 98% cotton/2% spandex
- Performance fabric resists spills and stains
- Dash of stretch for added comfort
- Inside adjustable waist helps fine-tune the fit
- Detailed side vents and hem

Plain Front Blended Shorts



Approved colors:

classic navy, khaki

Grades 6-8: classic navy

Logo is not allowed

231553-BQ4	LITTLE GIRL 4-6X	\$19.50
231555-BQ3	LITTLE GIRL SLIM 4-6X	\$19.50
320970-BQ5	GIRL 7, 8-16 EVEN	\$19.50
320971-BQX	GIRL SLIM 7, 8-16 EVEN	\$19.50
320972-BQ4	GIRL PLUS 7, 8-16 EVEN	\$19.50
320973-BQ9	WOMEN 00-20 EVEN	\$25.00

- 60% cotton/40% polyester
- Inside adjustable waist helps fine-tune the fit
- Neat, plain front
- Side & back pockets
- Just-above-knee length



Pleated Front Chino Shorts



Approved colors:

classic navy, khaki

Grades 6-8: classic navy

Logo is not allowed

231544-BQ5	LITTLE GIRL 4-6X	\$19.50
231545-BQX	LITTLE GIRL SLIM 4-6X	\$19.50
231548-BQ3	GIRL 7, 8-16 EVEN	\$19.50
231550-BQ0	GIRL SLIM 7, 8-16 EVEN	\$19.50
231551-BQ5	GIRL PLUS 7, 8-16 EVEN	\$19.50
231552-BQX	WOMEN 4-18 EVEN	\$25.50

- 60% cotton/40% polyester
- Inside adjustable waist helps fine-tune the fit
- Neat, plain front
- Side & back pockets
- Just-above-knee length

Solid Jumper



Approved colors:

Grades K-5: classic navy

Logo is not allowed

068175-BQ7	LITTLE GIRL 4-6X	\$35.00
068176-BQ1	GIRL 7, 8-16 EVEN	\$35.00
068177-BQ6	GIRL PLUS 7, 8-16 EVEN	\$35.00

- Taffeta lining in the bodice helps it slide on smoothly
- Extra-long back zipper makes for easier dressing
- Wrinkle-resistant polyester/rayon blend

Plaid Jumper



Approved colors:

Grades K-5: clear blue plaid

Logo is not allowed

065009-BQ1	LITTLE GIRL 4-6X	\$39.50
065010-BQ4	GIRL 7, 8-16 EVEN	\$39.50
065011-BQ9	GIRL PLUS 7, 8-16 EVEN	\$39.50

- Taffeta lining in the bodice helps it slide on smoothly
- Extra-long back zipper makes for easier dressing
- Wrinkle-resistant polyester/rayon blend



Solid A Line Skirt



Approved colors:

Grades 6-8: classic navy, khaki

Logo is not allowed

068045-BQ3	GIRL 7, 8-16 EVEN	\$29.50
068046-BQ8	GIRL SLIM 7, 8-16 EVEN	\$29.50
068047-BQ2	GIRL PLUS 7, 8-16 EVEN	\$29.50
250212-BQ7	WOMEN 00-20 EVEN	\$35.00

- Unique fabric blend resists wrinkles, lets you skip ironing!
- Elastic-back waistband won't gouge her middle
- Hidden side zipper and button closure looks tidy, makes dressing easy

Plaid A-line Skirt



Approved colors:

Grades 6-8: clear blue plaid

Logo is not allowed

053786-BQ1	GIRL 7, 8-16 EVEN	\$35.00
055614-BQ8	GIRL SLIM 7, 8-16 EVEN	\$35.00
055465-BQ5	GIRL PLUS 7, 8-16 EVEN	\$35.00
250213-BQ1	WOMEN 4-18 EVEN	\$39.50

- Unique fabric blend resists wrinkles, lets you skip ironing!
- Elastic-back waistband won't gouge her middle
- Hidden side zipper and button closure looks tidy, makes dressing easy

Solid Pleated At-The-Knee Skirt



Approved colors:

Grades 6-8: classic navy

Logo is not allowed

065145-BQ0	GIRL 7, 8-16 EVEN	\$29.50
065146-BQ5	GIRL SLIM 7, 8-16 EVEN	\$29.50
065147-BQX	GIRL PLUS 7, 8-16 EVEN	\$29.50
250211-BQ2	WOMEN 4-18 EVEN	\$35.00

- Elastic-back waistband provides extra breathing room
- Hidden side zipper simplifies dressing
- Drapey polyester/rayon blend shrugs off wrinkles



Long Chino Skort



Approved colors:

Grades 3-8: khaki

Logo is not allowed

320082-BQ3	LITTLE GIRL 4-6X	\$25.50
320081-BQ9	LITTLE GIRL SLIM 4-6X	\$25.50
320086-BQ1	GIRL 7, 8-16 EVEN	\$25.50
320084-BQ2	GIRL SLIM 7, 8-16 EVEN	\$25.50
320088-BQ0	GIRL PLUS 7, 8-16 EVEN	\$25.50
320089-BQ5	WOMEN 00-20 EVEN	\$29.50

- Easy-care 60% cotton/40% polyester blend
- Soft knit shorts tucked underneath
- Inside adjustable waist customizes the fit
- Little Girl sizes are a pull-on style with a back-elastic waist
- Girl sizes have a side-zip entry
- At-the-knee length

Pleated Plaid Skort



Approved colors:

Grades K-5: clear blue plaid

Logo is not allowed

231586-BQ9	LITTLE GIRL 4-6X	\$39.50
231587-BQ3	LITTLE GIRL SLIM 4-6X	\$39.50
231588-BQ8	GIRL 7, 8-16 EVEN	\$39.50
231589-BQ2	GIRL SLIM 7, 8-16 EVEN	\$39.50
231590-BQ5	GIRL PLUS 7, 8-16 EVEN	\$39.50
231591-BQX	WOMEN 4-18 EVEN	\$45.00

- 98% cotton/2% spandex
- Stretch twill fabric resists stains
- Skirt look, comfortable knit shorts underneath
- Inside adjustable waist helps fine-tune the fit
- Little girl: pull-on style with elastic waist
- Girl: button/zip closure with back-elastic waist

2 Button Stretch Skort



Approved colors:

khaki

Logo is not allowed

250205-BQ7	LITTLE GIRL 4-6X	\$25.00
250206-BQ1	LITTLE GIRL SLIM 4-6X	\$25.00
250207-BQ6	GIRL 7, 8-16 EVEN	\$25.00
250208-BQ0	GIRL SLIM 7, 8-16 EVEN	\$25.00
250209-BQ5	GIRL PLUS 7, 8-16 EVEN	\$25.00
250210-BQ8	WOMEN 4-18 EVEN	\$29.50

- 98% cotton/2% spandex sheds stains
- Touch of spandex for running, jumping ease
- Two pockets in front; one in back
- All-cotton knit shorts inside with a comfy waistband
- Inside adjustable waist helps fine-tune the fit
- Above-the-knee length



80/20 Fleece Crew



Approved colors:

classic navy

Logo #0834266 is mandatory

Prices include logo

306542-BQ1	LITTLE Kid S-L	\$21.00
306544-BQ0	Kid S-XL	\$21.00
219473-BQ1	WOMEN S-XL	\$25.00

- Heavy on the cottony softness, just enough polyester sturdiness
- Garment washing says, "bye-bye" to shrinkage
- Reinforced shoulders stand up to tugging and toddling
- Sag-resistant rib-knit neck, cuffs and bottom

Polar Fleece Jacket



Approved colors:

classic navy

Logo #0834266 is mandatory

Prices include logo

188727-BQ5	LITTLE Kid S-L	\$35.00
188726-BQ0	Kids S-XL	\$35.00
188724-BQ1	WOMEN S-XL	\$40.50

- Double-sided fleece holds out chills
- Improved fabric reduces pilling
- Full-zip front
- Two zip pockets

Polar Fleece Vest



Approved colors:

classic navy

Logo #0834266 is mandatory

Prices include logo

188731-BQ1	LITTLE Kid S-L	\$35.00
188730-BQ7	Kids S-XL	\$35.00
188728-BQX	WOMEN S-XL	\$40.50

- Double-sided fleece holds out chills
- Improved fabric reduces pilling
- Full-zip front
- Two zip pockets



Micro-Fleece Half-Zip Pullover



Approved colors:
classic navy

Either logo is mandatory
Choose either logo: #0836208 or #0834266

Prices include logo

315366-BQ0	LITTLE Kid S-L	\$25.00
315368-BQX	Kid S-XL	\$25.00

- Lightweight microfleece adds warmth not weight
- Partial-zip front for easy overhead dressing
- Antipilling finish keeps it looking neat

Welcome to Lands' End School!

Guaranteed. Period.[®]

If you're not satisfied with any item, return it to us at any time for an exchange or refund of its purchase price.

Pass-along quality.

We're serious about comfort, construction and durability. So our products hold up from the first day of school to the last. (And through the next kid in line.)

Shop by dress code online. Preferred Schools can view their dress code online to make ordering even easier.

3% cash back.

Preferred Schools earn 3% cash back on all uniform purchases. It's easy and free to sign up – visit landsend.com/school

Sizes for grades pre-K to 12.

We offer a great selection of Slim, Plus and Husky sizes for boys and girls.



1-800-469-2222

landsend.com/school

LANDS' END SCHOOL

All prices in U.S. dollars. Prices subject to change.
©Copyright 2009, Lands' End, Inc. All rights reserved.



LOGO #0836208K

Polos and Pullover Fleece logo



LOGO #0826205K

Oxford logo



LOGO # 0834266K

Outerwear and Sweater logo

Logo #0836208K, Polo & Pullover Fleece logo, \$5.50

- Your school has provided this logo and set certain restrictions regarding its use. Please check each individual product in your Dress Code for details
- Personalized monograms are not allowed with this logo
- Actual embroidery thread colors may vary

Logo #0826205K, Oxford logo, \$5.50

- Your school has provided this logo and set certain restrictions regarding its use. Please check each individual product in your Dress Code for details
- Personalized monograms are not allowed with this logo
- Actual embroidery thread colors may vary

Logo #0834266K, Outerwear and Sweater logo, \$5.50

- Your school has provided this logo and set certain restrictions regarding its use. Please check each individual product in your Dress Code for details
- Personalized monograms are not allowed with this logo
- Actual embroidery thread colors may vary

Required styles for Grades 9-12 Boys

- 1-Short sleeve white mesh polo, logo is mandatory
- 1-Short sleeve classic navy mesh polo, logo is mandatory
- 1-Plain front or pleated front khaki pant, logo is not allowed
- 1-Drifter crewneck sweater in classic navy, logo is not allowed
- 1-Long sleeve white oxford, logo is mandatory
- 1-Dark brown belt

Shoes

All grades: No crocs or flip flops



Short Sleeve Solid Performance Mesh Polo



Approved colors:

chambray blue, classic navy, cobalt, deep purple, evergreen, maize, white

Logo #0836208 is mandatory

Prices include logo

051469-BQ6	Kid S-XL	\$21.00
167541-BQ6	MEN S-XXL	\$25.00

- Soft, 100% cotton mesh
- Resists shrinkage, fading and pilling
- Stains wash out easier

Long Sleeve Solid Performance Mesh Polo



Approved colors:

chambray blue, classic navy, cobalt, deep purple, evergreen, maize, white

Logo #0836208 is mandatory

Prices include logo

051438-BQ0	Kid S-XL	\$23.00
167539-BQ9	MEN S-XXL	\$30.50

- Soft, 100% cotton mesh
- Resists shrinkage, fading and pilling
- Stains wash out easier

Short Sleeve Solid 60/40 Oxford Shirt



Approved colors:

blue, white

Logo #0836205 is mandatory

Prices include logo

219304-BQ8	Boy 8-20	\$23.00
219305-BQ2	Boy Husky 8-20	\$23.00
029414-BQ7	MEN S-XXL	\$28.00

- Easy-care 60% cotton/40% polyester blend
- Back yoke and box pleat for easy reaches
- Finely stitched double-needle seams



Long Sleeve Solid 60/40 Oxford Shirt



Approved colors:

blue, white

Logo #0836205 is mandatory

Prices include logo

219308-BQ6	Boy 8-20	\$25.00
219312-BQ2	Boy Husky 8-20	\$25.00
029413-BQ2	MEN S-XXL	\$30.00

- Easy-care 60% cotton/40% polyester blend
- Back yoke and box pleat for easy reaches
- Finely stitched double-needle seams

Short Sleeve No Iron Pinpoint Shirt



Approved colors:

blue, white

Logo #0836205 is mandatory

Prices include logo

315355-BQ2	Boy 8-20	\$35.00
315356-BQ7	MEN S-XL	\$43.50

- 100% no-iron cotton
- Back yoke and box pleat for easy reaches
- Finely stitched double-needle seams

Long Sleeve No Iron Pinpoint Shirt



Approved colors:

blue, white

Logo #0836205 is mandatory

Prices include logo

219320-BQ7	Boy 8-20	\$40.50
322776-BQ0	MEN S-XL	\$45.00

- 100% no-iron cotton
- Back yoke and box pleat for easy reaches
- Finely stitched double-needle seams



Drifter Crew Sweater



Approved colors:

classic navy

Logo is not allowed

223004-BQX	Kids S-XL	\$29.50
223006-BQ9	MEN S-XL	\$35.00
315272-BQ3	MEN TALL M-XXL	\$39.50

- Soft-as-can-be cotton for all-day comfort
- Fully fashioned for a better, more comfortable fit
- Raglan sleeves
- Shape-keeping rib trim

Plain Front Stain/Wrinkle Resistant Chinos



Approved colors:

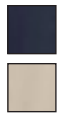
classic navy, khaki

Logo is not allowed

178254-BQ8	Boy 8-20	\$25.50
190515-BQ3	Boy SLIM 8-20	\$25.50
178255-BQ2	Boy HUSKY 8-20	\$25.50
243850-BQ3	MEN 30-44 EVEN, 31-37 ODD	\$32.50

- Soft 100% cotton
- Resists wrinkles, spills and stains
- Hidden adjustable waist provides a better fit
- Tots/Little Boy has back-elastic waist/snap closure
- Boy has a traditional waist/button closure
- Pre-hemmed

Plain Front Chino Pants



Approved colors:

classic navy, khaki

Logo is not allowed

191127-BQ7	Boy 8-20	\$25.50
191128-BQ1	Boy SLIM 8-20	\$25.50
191129-BQ6	Boy HUSKY 8-20	\$25.50
191130-BQ9	MEN 30 EVEN, 31, 37 ODD	\$32.50

- Easy-care 60% polyester/40% cotton blend
- Reinforced pockets front and back
- Neat plain-front styling
- Little Boy has a back-elastic waist/snap closure
- Boy has a traditional waist/button closure



Pleated Stain/Wrinkle Resistant Chino Pants



Approved colors:

classic navy, khaki

Logo is not allowed

178435-BQ0	Boy 8-20	\$25.50
178439-BQ9	Boy SLIM 8-20	\$25.50
178437-BQX	Boy HUSKY 8-20	\$25.50

- Soft 100% cotton
- Resists wrinkles, spills and stains
- Hidden adjustable waist provides a better fit
- Tots/Little Boy have back-elastic waist/snap closure
- Boy has a traditional waist/button closure
- Pre-hemmed

Pleated Stain/Wrinkle Resistant Chino Pants



Approved colors:

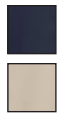
classic navy, khaki

Logo is not allowed

178435-BQ0	Boy 8-20	\$25.50
178439-BQ9	Boy SLIM 8-20	\$25.50
178437-BQX	Boy HUSKY 8-20	\$25.50

- Soft 100% cotton
- Resists wrinkles, spills and stains
- Hidden adjustable waist provides a better fit
- Tots/Little Boy have back-elastic waist/snap closure
- Boy has a traditional waist/button closure
- Pre-hemmed

Pleated Chino Pants



Approved colors:

classic navy, khaki

Logo is not allowed

231063-BQ4	Boy 8-20	\$25.50
231064-BQ9	Boy SLIM 8-20	\$25.50
231065-BQ3	Boy HUSKY 8-20	\$25.50
231066-BQ8	MEN 30-44 EVEN, 31-37 Odd	\$32.50

- Easy-care 60% polyester/40% cotton blend
- Reinforced pockets front and back
- Little Boy has back-elastic waist/snap closure
- Boy has a traditional waist/button closure



Pleated Reinforced Knee Blend Chinos



Approved colors:

classic navy, khaki

Logo is not allowed

231069-BQ1	Boy 8-20	\$25.50
231070-BQ4	Boy SLIM 8-20	\$25.50
231071-BQ9	Boy HUSKY 8-20	\$25.50

- Easy-care 60% cotton/40% polyester blend
- Hidden adjustable waist for a better fit
- Extra layer of interlining resists roughhousing
- Little Boy has back-elastic waist/snap closure
- Boy has a traditional waist/button closure

Blended Elastic Waist Chino Pants



Approved colors:

classic navy, khaki

Logo is not allowed

092513-BQ9	Boy 8-20	\$25.50
092515-BQ8	Boy HUSKY 8-20	\$25.50
092516-BQ2	MEN 30-44 EVEN, 31-37 ODD	\$32.50

- 60% cotton/40% polyester
- Comfortable elastic waist
- Carefree - just toss in the wash

Blended Plain Front Chino Shorts



Approved colors:

classic navy, khaki

Logo is not allowed

184384-BQ5	Boy 8-20	\$19.50
231175-BQX	Boy SLIM 8-20	\$19.50
231176-BQ4	Boy HUSKY 8-20	\$19.50
241937-BQ7	MEN 30-44 EVEN, 31-37 ODD	\$25.00

- Easy care 60% polyester/40% cotton
- Touch of elastic-waist ease
- Handy side pockets



Stain/Wrinkle Resistant Chino Shorts



Approved colors:

classic navy, khaki

Logo is not allowed

231164-BQ1	Boy 8-20	\$24.50
231167-BQ5	Boy SLIM 8-20	\$24.50
231168-BQX	Boy HUSKY 8-20	\$24.50
231170-BQ7	MEN 30-44 EVEN, 31-37 Odd	\$29.50

- 100% combed cotton twill
- Resists stains for a neat appearance
- Adjustable waist for a great fit
- Neat, plain front
- Side & back pockets

Pleated Blend Chino Shorts



Approved colors:

classic navy, khaki

Logo is not allowed

231152-BQ9	Boy 8-20	\$19.50
231154-BQ8	Boy SLIM 8-20	\$19.50
231155-BQ2	Boy HUSKY 8-20	\$19.50
231156-BQ7	MEN 30-44 EVEN, 31-37 Odd	\$25.00

- Easy care 60% polyester/40% cotton
- Touch of elastic-waist ease
- Handy side pockets

80/20 Fleece Crew



Approved colors:

classic navy

Logo #0834266 is mandatory

Prices include logo

306544-BQ0	Kid S-XL	\$21.00
219474-BQ6	MEN S-XXL	\$25.00

- Heavy on the cottony softness, just enough polyester sturdiness
- Garment washing says, "bye-bye" to shrinkage
- Reinforced shoulders stand up to tugging and toddling
- Sag-resistant rib-knit neck, cuffs and bottom



Polar Fleece Jacket



Approved colors:

classic navy

Logo #0834266 is mandatory

Prices include logo

188726-BQ0	Kids S-XL	\$35.00
188725-BQ6	MEN S-XXL	\$40.50

- Double-sided fleece holds out chills
- Improved fabric reduces pilling
- Full-zip front
- Two zip pockets

Polar Fleece Vest



Approved colors:

classic navy

Logo #0834266 is mandatory

Prices include logo

188730-BQ7	Kids S-XL	\$35.00
188729-BQ4	MEN S-XXL	\$40.50

- Double-sided fleece holds out chills
- Improved fabric reduces pilling
- Full-zip front
- Two zip pockets

Micro-Fleece Half-Zip Pullover



Approved colors:

classic navy

Either logo is mandatory

Choose either logo: #0836208 or #0834266

Prices include logo

315368-BQX	Kid S-XL	\$25.00
------------	----------	---------

- Lightweight microfleece adds warmth not weight
- Partial-zip front for easy overhead dressing
- Antipilling finish keeps it looking neat

Welcome to Lands' End School!

Guaranteed. Period.®

If you're not satisfied with any item, return it to us at any time for an exchange or refund of its purchase price.

Pass-along quality.

We're serious about comfort, construction and durability. So our products hold up from the first day of school to the last. (And through the next kid in line.)

Shop by dress code online. Preferred Schools can view their dress code online to make ordering even easier.

3% cash back.

Preferred Schools earn 3% cash back on all uniform purchases. It's easy and free to sign up – visit landsend.com/school

Sizes for grades pre-K to 12.

We offer a great selection of Slim, Plus and Husky sizes for boys and girls.



1-800-469-2222

landsend.com/school

LANDS' END SCHOOL

All prices in U.S. dollars. Prices subject to change.
©Copyright 2009, Lands' End, Inc. All rights reserved.



LOGO #0836208K

Polos and Pullover Fleece logo

Logo #0836208K, Polo & Pullover Fleece logo, \$5.50

- Your school has provided this logo and set certain restrictions regarding its use. Please check each individual product in your Dress Code for details
- Personalized monograms are not allowed with this logo
- Actual embroidery thread colors may vary



LOGO #0826205K

Oxford logo

Logo #0826205K, Oxford logo, \$5.50

- Your school has provided this logo and set certain restrictions regarding its use. Please check each individual product in your Dress Code for details
- Personalized monograms are not allowed with this logo
- Actual embroidery thread colors may vary



LOGO # 0834266K

Outerwear and Sweater logo

Logo #0834266K, Outerwear and Sweater logo, \$5.50

- Your school has provided this logo and set certain restrictions regarding its use. Please check each individual product in your Dress Code for details
- Personalized monograms are not allowed with this logo
- Actual embroidery thread colors may vary

Required styles for Grades 9-12 Girls

- 1-Short sleeve white mesh polo (feminine fit or regular fit), logo is mandatory
- 1-Short sleeve classic navy mesh polo (feminine fit or regular fit), logo is mandatory
- 1-Plain front or pleated front khaki pant, logo is not allowed
- 1-Drifter crewneck cable sweater in classic navy, logo is not allowed
- 1-Long sleeve white oxford, logo is mandatory
- 1-Dark brown belt

Shoes

All grades: No crocs or flip flops



Short Sleeve Solid Performance Mesh Polo



Approved colors:

chambray blue, classic navy, deep purple, ice pink, maize, white

Logo #0836208 is mandatory

Price includes logo

051469-BQ6	Kid S-XL	\$21.00
167542-BQ0	WOMEN S-XL	\$25.00

- Soft, 100% cotton mesh
- Resists shrinkage, fading and pilling
- Stains wash out easier

Long Sleeve Solid Performance Mesh Polo



Approved colors:

chambray blue, classic navy, deep purple, ice pink, maize, white

Logo #0836208 is mandatory

Price includes logo

051438-BQ0	Kid S-XL	\$23.00
167540-BQ1	WOMEN S-XL	\$30.50

- Soft, 100% cotton mesh
- Resists shrinkage, fading and pilling
- Stains wash out easier

Short Sleeve Feminine Fit Mesh Polo



Approved colors:

chambray blue, classic navy, deep purple, ice pink, maize, white

Logo #0836208 is mandatory

Price includes logo

230949-BQ7	GIRL S-XL	\$21.00
230950-BQX	WOMEN XS-XL	\$25.00
315253-BQ0	WOMEN PLUS 1X-3X	\$30.50

- 100% cotton
- Soft, mesh fabric keeps her cool
- Gently shaped side seams are more flattering
- Enhanced fabric keeps colors true
- Resists stains and shrinkage
- Top-of-hip length with side vents



Long Sleeve Mesh Feminine Fit Polo



Approved colors:

chambray blue, classic navy, deep purple, ice pink, maize, white

Logo #0836208 is mandatory

Prices include logo

230952-BQ9	GIRL S-XL	\$23.00
230953-BQ3	WOMEN XS-XL	\$30.50
315261-BQ5	WOMEN PLUS 1X-3X	\$35.50

- 100% cotton
- Soft, mesh fabric keeps her cool
- Gently shaped side seams are more flattering
- Enhanced fabric keeps colors true
- Resists stains and shrinkage
- Top-of-hip length with side vents

Long Sleeve Oxford Shirt



Approved colors:

dark pink, white

Logo #0836205 is mandatory

Prices include logo

219324-BQ5	GIRL 7-16	\$25.00
284294-BQ5	WOMEN XS-XL	\$30.50
315311-BQX	WOMEN PLUS 1X-3X	\$35.00

- 60% cotton/40% polyester fabric foils wrinkles
- Breathable easy care fabric
- Feminine fit

Three-quarter Sleeve Oxford Shirt



Approved colors:

white

Logo is not allowed

320036-BQ3	GIRL 7-16	\$19.50
027049-BQ6	WOMEN 00-20	\$25.00

- 60% cotton/40% polyester fabric foils wrinkles
- Breathable easy care fabric
- Feminine shaping for a better fit



Short Sleeve Ruffled Collar Peter Pan Knit Top



Approved colors:

white

Logo is not allowed

255160-BQ2	GIRL S-XL	\$18.50
------------	-----------	---------

- Cushy soft 100% combed-cotton knit
- Delicate ruffles and two-button placket
- Looks finished tucked in or out
- Top-of-the-hip length

Long Sleeve Ruffled Collar Peter Pan Knit Top



Approved colors:

white

Logo is not allowed

230939-BQ3	GIRL S-XL	\$22.50
------------	-----------	---------

- Cushy soft 100% combed-cotton knit
- Delicate ruffles and two-button placket
- Looks finished tucked in or out
- Top-of-the-hip length

Fine Gauge Cardigan



Approved colors:

classic navy

Logo #0834266 is optional

For logo #0834266 add \$5.50 per item

092807-BQ1	GIRL S-XL	\$25.50
092808-BQ6	WOMEN S-XL	\$40.00

- 100% cotton
- Fully fashioned to fit great
- No bulky shoulder seams
- Sag-free rib-knit trim



Cable Crewneck Sweater



Approved colors:

classic navy

Logo is not allowed

092918-BQ2	GIRL S-XL	\$24.50
092919-BQ7	WOMEN S-XL	\$29.50

- 100% cotton
- Fully fashioned to fit great
- All-over cable design
- Sag-free rib-knit trim

Cable Button Crewneck Sweater



Approved colors:

classic navy

Logo #0834266 is optional

For logo #0834266 add \$5.50 per item

320033-BQX	GIRL S-XL	\$34.50
------------	-----------	---------

- 100% cotton
- Intricate all-over cable design
- Carefully knit to layer nicely over polos or blouses
- Full-button front

Stain Resistant Chino Pants



Approved colors:

classic navy, khaki

Logo is not allowed

219338-BQ7	GIRL 7, 8-16 EVEN	\$29.50
219337-BQ2	GIRL SLIM 7, 8-16 EVEN	\$29.50
219339-BQ1	GIRL PLUS 7, 8-16 EVEN	\$29.50

- 98% cotton/2% spandex
- Performance fabric resists spills and stains
- Dash of stretch for added comfort
- Inside adjustable waist helps fine-tune the fit



Plain Front Blended Chino Pants



Approved colors:

classic navy, khaki

Logo is not allowed

231118-BQ1	GIRL 7, 8-16 EVEN	\$25.50
231119-BQ6	GIRL SLIM 7, 8-16 EVEN	\$25.50
231120-BQ9	GIRL PLUS 7, 8-16 EVEN	\$25.50
231121-BQ3	WOMEN 00-20 EVEN	\$32.50

- 60% cotton/40% polyester
- Blend fabric resists stains and wrinkles
- Inside adjustable waist helps fine-tune the fit

Poly Blend Feminine Fit Pants



Approved colors:

classic navy, khaki

Logo is not allowed

381249-BQ3	GIRL 7, 8-16 EVEN	\$29.50
381250-BQ6	GIRL SLIM 7, 8-16 EVEN	\$29.50
381251-BQ0	GIRL PLUS 7, 8-16 EVEN	\$29.50
381252-BQ5	WOMEN 0-18 EVEN	\$34.50

- 60% cotton/40% polyester
- Blend fabric resists stains and wrinkles
- Inside adjustable waist helps fine-tune the fit

Pleated Front Blended Chino Pants



Approved colors:

classic navy, khaki

Logo is not allowed

231112-BQ4	GIRL 7, 8-16 EVEN	\$25.50
231113-BQ9	GIRL SLIM 7, 8-16 EVEN	\$25.50
231114-BQ3	GIRL PLUS 7, 8-16 EVEN	\$25.50
231115-BQ8	WOMEN 4-18 EVEN	\$32.50

- 60% cotton/40% polyester
- Blend fabric resists stains and wrinkles
- Inside adjustable waist helps fine-tune the fit
- Little Girl: snap-front closure, back elastic for ease
- Girl: button-front closure



Elastic Waist Chino Pants



Approved colors:

classic navy, khaki

Logo is not allowed

092604-BQ2	GIRL 7, 8-16 EVEN	\$25.50
092606-BQ1	GIRL PLUS 7, 8-16 EVEN	\$25.50
092607-BQ6	WOMEN 4-18 EVEN	\$32.50

- 60% polyester/40% cotton
- Comfortable full elastic waist
- Wrinkle-free fabric
- Slightly flared legs
- Two side pockets; one in back

Stretch Stain Resistant Flare Pants



Approved colors:

classic navy, khaki

Logo is not allowed

231123-BQ2	GIRL 7, 8-16 EVEN	\$29.50
219330-BQ0	GIRL SLIM 7, 8-16 EVEN	\$29.50
231124-BQ7	GIRL PLUS 7, 8-16 EVEN	\$29.50
231125-BQ1	WOMEN 4-18 EVEN	\$35.50

- 98% cotton/2% spandex twill
- Performance fabric resists stains and spills
- Inside adjustable waist helps fine-tune the fit
- Little Girl: snap closure with back elastic for extra ease
- Girl: button-front closure

Feminine Fit Flare Pants



Approved colors:

classic navy, khaki

Logo is not allowed

381253-BQX	GIRL 7, 8-16 EVEN	\$29.50
381254-BQ4	GIRL SLIM 7, 8-16 EVEN	\$29.50
381255-BQ9	GIRL PLUS 7, 8-16 EVEN	\$29.50
381256-BQ3	WOMEN 0-20 EVEN	\$34.50

- 98% cotton/2% spandex twill
- Performance fabric resists stains and spills
- Inside adjustable waist helps fine-tune the fit
- Girl: button-front closure



Stretch Crop Pants



Approved colors:

classic navy, khaki

Logo is not allowed

191403-BQX	GIRL 7, 8-16 EVEN	\$25.50
191404-BQ4	GIRL SLIM 7, 8-16 EVEN	\$25.50
191405-BQ9	GIRL PLUS 7, 8-16 EVEN	\$25.50
191406-BQ3	WOMEN 4-18 EVEN	\$29.50

- 98% cotton/2% spandex
- Performance fabric resists spills and stains
- Dash of stretch for added comfort
- Inside adjustable waist helps fine-tune the fit
- Detailed side vents and hem

Plain Front Blended Shorts



Approved colors:

classic navy, khaki

Logo is not allowed

320970-BQ5	GIRL 7, 8-16 EVEN	\$19.50
320971-BQX	GIRL SLIM 7, 8-16 EVEN	\$19.50
320972-BQ4	GIRL PLUS 7, 8-16 EVEN	\$19.50
320973-BQ9	WOMEN 00-20 EVEN	\$25.00

- 60% cotton/40% polyester
- Inside adjustable waist helps fine-tune the fit
- Neat, plain front
- Side & back pockets
- Just-above-knee length

Pleated Front Chino Shorts



Approved colors:

classic navy, khaki

Logo is not allowed

231548-BQ3	GIRL 7, 8-16 EVEN	\$19.50
231550-BQ0	GIRL SLIM 7, 8-16 EVEN	\$19.50
231551-BQ5	GIRL PLUS 7, 8-16 EVEN	\$19.50
231552-BQX	WOMEN 4-18 EVEN	\$25.50

- 60% cotton/40% polyester
- Inside adjustable waist helps fine-tune the fit
- Neat, plain front
- Side & back pockets
- Just-above-knee length



Solid A Line Skirt



Approved colors:

classic navy, khaki

Logo is not allowed

068045-BQ3	GIRL 7, 8-16 EVEN	\$29.50
068046-BQ8	GIRL SLIM 7, 8-16 EVEN	\$29.50
068047-BQ2	GIRL PLUS 7, 8-16 EVEN	\$29.50
250212-BQ7	WOMEN 00-20 EVEN	\$35.00

- Unique fabric blend resists wrinkles, lets you skip ironing!
- Elastic-back waistband won't gouge her middle
- Hidden side zipper and button closure looks tidy, makes dressing easy

Plaid A-line Skirt



Approved colors:

clear blue plaid

Logo is not allowed

053786-BQ1	GIRL 7, 8-16 EVEN	\$35.00
055614-BQ8	GIRL SLIM 7, 8-16 EVEN	\$35.00
055465-BQ5	GIRL PLUS 7, 8-16 EVEN	\$35.00
250213-BQ1	WOMEN 4-18 EVEN	\$39.50

- Unique fabric blend resists wrinkles, lets you skip ironing!
- Elastic-back waistband won't gouge her middle
- Hidden side zipper and button closure looks tidy, makes dressing easy

Solid Pleated At-The-Knee Skirt



Approved colors:

classic navy

Logo is not allowed

065145-BQ0	GIRL 7, 8-16 EVEN	\$29.50
065146-BQ5	GIRL SLIM 7, 8-16 EVEN	\$29.50
065147-BQX	GIRL PLUS 7, 8-16 EVEN	\$29.50
250211-BQ2	WOMEN 4-18 EVEN	\$35.00

- Elastic-back waistband provides extra breathing room
- Hidden side zipper simplifies dressing
- Drapey polyester/rayon blend shrugs off wrinkles



Pleated Plaid Skirt



Approved colors:

clear blue plaid

Logo is not allowed

219423-BQ3	GIRL 7, 8-16 EVEN	\$35.00
219428-BQ6	GIRL SLIM 7, 8-16 EVEN	\$35.00
219418-BQ2	GIRL PLUS 7, 8-16 EVEN	\$35.00
219455-BQ3	WOMEN 4-18 EVEN	\$39.50

- Elastic-back waistband provides extra breathing room
- Hidden side zipper simplifies dressing
- Drapery polyester/rayon blend shrugs off wrinkle

2 Button Stretch Skort



Approved colors:

khaki

Logo is not allowed

250207-BQ6	GIRL 7, 8-16 EVEN	\$25.00
250208-BQ0	GIRL SLIM 7, 8-16 EVEN	\$25.00
250209-BQ5	GIRL PLUS 7, 8-16 EVEN	\$25.00
250210-BQ8	WOMEN 4-18 EVEN	\$29.50

- 98% cotton/2% spandex sheds stains
- Touch of spandex for running, jumping ease
- Two pockets in front; one in back
- All-cotton knit shorts inside with a comfy waistband
- Inside adjustable waist helps fine-tune the fit
- Above-the-knee length

80/20 Fleece Crew



Approved colors:

classic navy

Logo #0834266 is mandatory

Prices include logo

306544-BQ0	Kid S-XL	\$21.00
219473-BQ1	WOMEN S-XL	\$25.00

- Heavy on the cottony softness, just enough polyester sturdiness
- Garment washing says, "bye-bye" to shrinkage
- Reinforced shoulders stand up to tugging and toddling
- Sag-resistant rib-knit neck, cuffs and bottom



Polar Fleece Jacket



Approved colors:

classic navy

Logo #0834266 is mandatory

Prices include logo

188726-BQ0	Kids S-XL	\$35.00
188724-BQ1	WOMEN S-XL	\$40.50

- Double-sided fleece holds out chills
- Improved fabric reduces pilling
- Full-zip front
- Two zip pockets

Polar Fleece Vest



Approved colors:

classic navy

Logo #0834266 is mandatory

Prices include logo

188730-BQ7	Kids S-XL	\$35.00
188728-BQX	WOMEN S-XL	\$40.50

- Double-sided fleece holds out chills
- Improved fabric reduces pilling
- Full-zip front
- Two zip pockets

Micro-Fleece Half-Zip Pullover



Approved colors:

classic navy

Either logo is mandatory

Choose either logo: #0836208 or #0834266

Prices include logo

315368-BQX	Kid S-XL	\$25.00
------------	----------	---------

- Lightweight microfleece adds warmth not weight
- Partial-zip front for easy overhead dressing
- Antipilling finish keeps it looking neat



girls' and women's guide to a GREAT UNIFORM FIT

ORDER THE RIGHT SIZE, FIRST TRY.

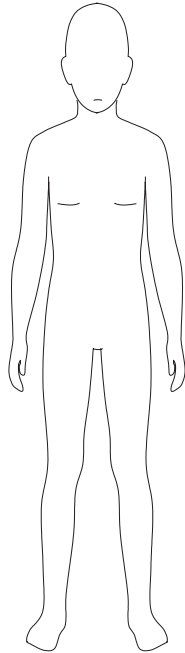
1. Kids grow fast, so measure your child every time you buy.
2. Remove bulky or heavy layers before measuring.
3. Begin with height, it's the best indicator to determine a child's size.
4. After height, a child's weight and/or waist measurement is the best gauge if your child needs an extended size (slim or plus).

HOW DO I KNOW IF MY CHILD NEEDS AN EXTENDED SIZE?

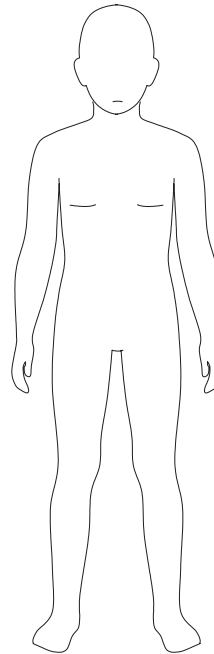
1. If you normally buy her a size 12 to fit her waist, but the inseam is always too long, she may need a 10 Plus (10+). Here's why: a 10+ will give her extra room around her waist, yet has a shorter inseam, for a better overall fit in the waist and length.
2. If you normally buy her a size 12 to fit her waist, but the inseam is always too short, she may need a 14 Slim (14S). Here's why: a 14S is slimmer through the waist, yet has a longer inseam, for a better overall fit in waist and length.

LANDS' END SCHOOL

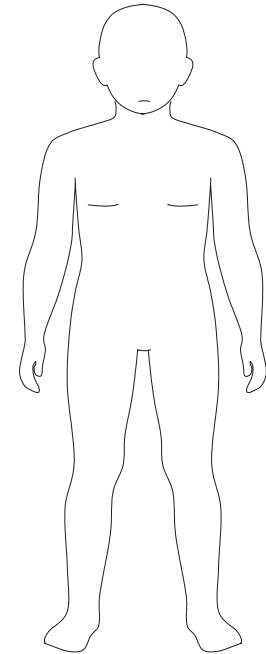
girls' SIZE CHART



SLIM (S)
Thin body and frame
in relation to height



REGULAR (R)
Average frame
and proportions



PLUS (+)
Fuller body in proportion
to height

REMEMBER! Start with height.

HEIGHT: Child should stand in stocking feet, with feet shoulder width apart, back to a wall. Measure from the floor to the crown of head.

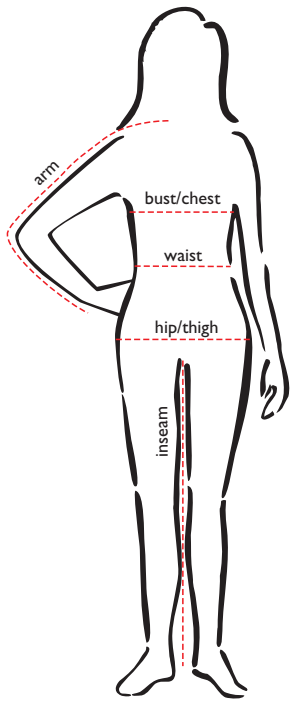
WAIST: Measure at natural waistline. Have the child bend to one side. Where the body curves is the natural waistline.

Toddler			
Size	2T	3T	4T
Height	33-35	36-38	39-41
Weight	27-29	30-33	34-38
Waist	20	20½	21

Little Girl (Slim, Reg)							
Size	Small		Medium			Large	
	4S	4R	5S	5R	6S	6R	6XS 6XR
Height	39-41		42-44		45-47		47-49
Weight	32-34	34-38	35-39	39-44	40-45	45-49	46-48 49-53
Waist	19½	21½	20	22	20½	22½	21 23

Big Girl (Slim, Reg, Plus)																		
Size	Small						Medium						Large			X-Large		
	7S	7R	7+	8 S	8R	8+	10S	10R	10+	12S	12R	12+	14S	14R	14+	16S	16R	16+
Height	48-50			51-53			54-57			57-59			60-61			62-63		
Weight	44-50	50-56	56-64	51-56	57-64	64-73	64-73	73-84	84-96	81-92	92-106	106-122	98-108	108-125	125-146	109-119	119-135	135-155
Waist	21½	23	27½	22	23½	28	23	24½	29	24	25½	30	25	26½	31	26	27½	32

women's SIZE CHART



Women's Tops																						
	xx-small		x-small		small		medium		large		x-large		1X		2X		3X		4X		5X	
Size	00	0	2	4	6	8	10	12	14	16	18	20	16W	18W	20W	22W	24W	26W	28W	30W	32W	34W
bust/chest	31	32	33	34	35	36	37	38	40	41	43	45	43	45	47	49	51	53	55	57	59	61
arm (petite)	27 ½	28	28 ¾	28	29 ½	29	29 ¾	30	30 ¾	31	31 ¾	31	--	--	--	--	--	--	--	--	--	--
arm (regular)	28 ¾	29	29 ¾	29	30 ½	30	30 ¾	31	31 ¾	32	32 ¾	32	--	--	--	--	--	--	--	--	--	--
arm (tall)	--	--	30 ¾	30	31 ½	31	31 ¾	32	32 ¾	33	33 ¾	33	--	--	--	--	--	--	--	--	--	--
arm (women's)	--	--	--	--	--	--	--	--	--	--	--	--	31	32 ½	32	32 ¾	33 ½	33 ¾	33 ¾	33 ¾	34 ½	34 ¾

Women's Bottoms																						
	xx-small		x-small		small		medium		large		x-large		1X		2X		3X		4X		5X	
Size	00	0	2	4	6	8	10	12	14	16	18	20	16W	18W	20W	22W	24W	26W	28W	30W	32W	34W
waist	24 to 25	25 to 26	26 to 27	27 to 28	28 to 29	29 to 30	30 to 31	31 to 32	33 to 34	34 to 36	36 to 38	39 to 41	37 to 38	39 to 40	41 to 42	43 to 44	45 to 46	47 to 48	49 to 50	51 to 52	53 to 54	55 to 56
hip/thigh	34	35	36	37	38	39	40	41	43	44	46	48	46	48	50	52	54	56	58	60	61	63

To measure accurately, keep the tape measure taut, but don't pull it tight. Get a friend to help, if possible. Measure over well-fitting undergarments.

BUST/CHEST: measure around fullest part of chest, keeping tape parallel to the floor.

ARM: with hand on hip, measure from center back at neck, across shoulder, elbow, down to wrist bone.

WAIST: bend to side; measure where body curves – even if you wear your pants lower.

HIPS: with feet shoulder width apart, measure fullest part of hip/thigh area.

INSEAM: measure inside leg seam of pants from crotch to hem.

Women's Regular, Petite, Tall or 18W-26W?

Regular: hips slightly larger than bust.

Petite: shorter in the torso. Shorter sleeves and body, narrower shoulders.

Tall: long torsos. Body length up 1-1/2" and sleeve length up 1" from Regular.

Women's 18W-26W: proportioned for fuller figures. 18W is 2" larger in the bust, waist and hip than 18 regular. Arm girths are larger; shoulder widths narrower.



boys' and men's guide to a GREAT UNIFORM FIT

ORDER THE RIGHT SIZE, FIRST TRY.

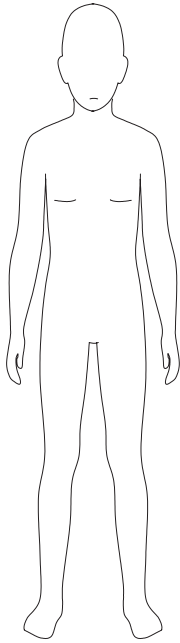
1. Kids grow fast, so measure your child every time you buy.
2. Remove bulky or heavy layers before measuring.
3. Begin with height, it's the best indicator to determine a child's size.
4. After height, a child's weight and/or waist measurement is the best gauge if your child needs an extended size (slim or plus).

HOW DO I KNOW IF MY CHILD NEEDS AN EXTENDED SIZE?

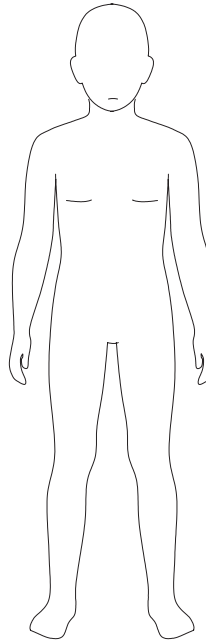
1. If you normally buy him a size 12 to fit his waist, but the inseam is always too long, he may need a 10 HUSKY (10H). Here's why: a 10H will give him extra room around his waist, yet has a shorter inseam, for a better overall fit in the waist and length.
2. If you normally buy him a size 12 to fit his waist, but the inseam is always too short, he may need a 14 Slim (14S). Here's why: a 14S is slimmer through the waist, yet has a longer inseam, for a better overall fit in waist and length.

LANDS' END SCHOOL

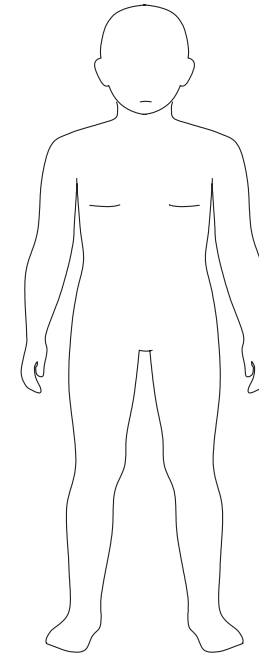
boys' SIZE CHART



SLIM (S)
Thin body and frame
in relation to height



REGULAR (R)
Average frame
and proportions



HUSKY (H)
Fuller body in proportion
to height

REMEMBER! Start with height.

HEIGHT: Child should stand in stocking feet, with feet shoulder width apart, back to a wall. Measure from the floor to the crown of head.

WAIST: Measure at natural waistline. Have the child bend to one side. Where the body curves is the natural waistline.

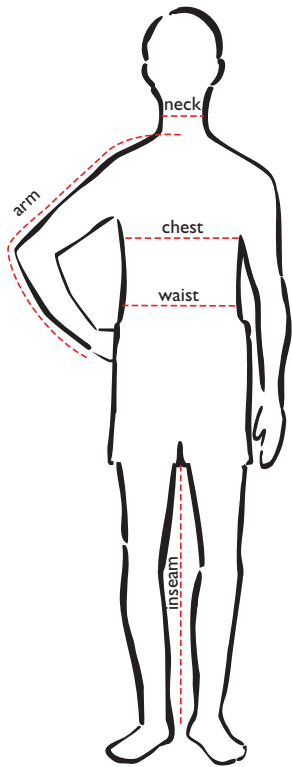
Toddler			
Size	2T	3T	4T
Height	33-35	36-38	39-41
Weight	27-29	30-33	34-38
Waist	20	20½	21

Little Boy (Slim, Reg)									
Size	Small		Medium				Large		
	4S	4R	5S	5R	6S	6R	7S	7R	
Height	39-41		42-44		45-47		48-50		
Weight	32-34	34-38	35-39	39-44	40-45	45-49	49-50	50-56	
Waist	19½	21½	20	22	20½	22½	21	23	

Big Boy (Slim, Reg, Husky)									
Size	Small			Medium					
	8S	8R	8H	10S	10R	10H	12S	12R	12H
Height	51-53			54-57			58-61		
Weight	52-56	56-64	64-72	62-70	70-80	80-92	78-90	90-102	102-118
Waist	21½	23½	26½	22½	24½	27½	23½	25½	28½

Big Boy (Slim, Reg, Husky)												
Size	Large						X-Large					
	14S	14R	14H	16S	16R	16H	18S	18R	18H	20S	20R	20H
Height	62-63			64-65			66-67			68-70		
Weight	95-102	112-128	128-146	120-134	134-152	152-162	134-148	148-166	164-172	140-156	156-174	174-196
Waist	24½	26½	29½	26	28	31	27	29	32	28	30	33

men's SIZE CHART



Men's																		
	small		medium		large		x-large		xx-large		2XL		3XL		4XL		5XL	
neck	14	14	15	15	16	16	17	17	18	18	18	18	19	19	20	20	21	21
chest	34	36	38	40	42	44	46	48	50	52	50	52	54	56	58	60	62	64
arm (regular)	32	33	33	34	34	35	35	36	36	36	35	35	36	36	37	37	38	38
arm (tall)	34	34	35	35	36	36	37	37	38	38	36	37	37	38	38	39	39	40
waist (regular)	28	30	32	34	36	38	40	42	44	46	48	48	50	52	54	56	58	60
hips	34	36	38	40	42	44	45	47	48	50	51		53	54	55	55	56	56

To measure accurately, keep the tape measure taut, but don't pull it tight. Get a friend to help, if possible. Measure over well-fitting undergarments.

CHEST: measure around fullest part of chest, keeping tape parallel to the floor.

ARM: with hand on hip, measure from center back at neck, across shoulder, elbow, down to wrist bone.

WAIST: bend to side; measure where body curves – even if you wear your pants lower.

HIPS: with feet shoulder width apart, measure fullest part of hip/thigh area.

INSEAM: measure inside leg seam of pants from crotch to hem.

Men's Regular, Tall or Big?

Regular: hips and chest of equal girth.

Tall (or Long): long torso. Body of shirts is 1-1/2" to 2" longer than Regular. Coat sleeve and body length is 1-1/2" longer.

Big: average torso length, just larger overall. Pockets and other details increase in size for a pleasing proportion.